



Francisella marina sp. nov., Etiologic Agent of Systemic Disease in Cultured Spotted Rose Snapper (*Lutjanus guttatus*) in Central America

Esteban Soto,^a Matt J. Griffin,^b Juan Alberto Morales,^c Elías Barquero Calvo,^d Fernanda de Alexandre Sebastião,^a Adrián Lopez Porras,^c Xindy Viquez-Rodríguez,^d Stephen R. Reichley,^{b*} Thomas G. Rosser,^e Cynthia Ware,^b Barbara A. Byrne,^f Julio C. García,^g Benjamin R. LaFrentz,^g Alvin C. Camus^h

^aDepartment of Medicine & Epidemiology, School of Veterinary Medicine, University of California, Davis, California, USA

^bDepartment of Pathobiology and Population Medicine, College of Veterinary Medicine, Mississippi State University, Stoneville, Mississippi, USA

^cDepartamento de Patología, Escuela de Medicina Veterinaria, Universidad Nacional, Heredia, Costa Rica

^dPrograma de Investigación en Enfermedades Tropicales, Escuela de Medicina Veterinaria, Universidad Nacional, Heredia, Costa Rica

^eDepartment of Basic Sciences, College of Veterinary Medicine, Mississippi State University, Starkville, Mississippi, USA

^fDepartment of Pathology, Microbiology, and Immunology, School of Veterinary Medicine, University of California, Davis, California, USA

^gUSDA-ARS, Aquatic Animal Health Research Unit, Auburn, Alabama, USA

^hDepartment of Pathology, College of Veterinary Medicine, University of Georgia, Athens, Georgia, USA

ABSTRACT Historically, piscine francisellosis in various warm-, temperate-, and cold-water fish hosts has been attributed to *Francisella noatunensis*. From 2015 to 2016, an undescribed *Francisella* sp. was recovered during mortality events in cultured spotted rose snapper (*Lutjanus guttatus*) off the Pacific coast of Central America. Despite high mortality and emaciation, limited gross findings were observed in affected fish. Histological examination revealed multifocal granulomatous lesions, with the presence of numerous small, pleomorphic coccobacilli, predominantly in the peritoneum, spleen, kidneys, liver, pancreas, heart, and intestine. Sequencing of an ~1,400-bp fragment of the 16S rRNA gene demonstrated these isolates to be most similar (99.9% identity) to *Francisella* sp. isolate TX077308 cultured from seawater in the Gulf of Mexico, while sharing <99% similarity to other *Francisella* spp. Biochemical analysis, multilocus sequence comparisons of select housekeeping genes, repetitive extragenic palindromic PCR fingerprinting, matrix-assisted laser desorption ionization–time of flight mass spectrometry, and fatty acid methyl ester analysis revealed marked differences between these isolates and other described members of the genus. Koch’s postulates were fulfilled by experimental intracoelomic injection and immersion trials using Nile (*Oreochromis niloticus*) and blue (*Oreochromis aureus*) tilapia. Based on observed phenotypic and genotypic differences from recognized *Francisella* spp., the name *Francisella marina* sp. nov. (NRRL B-65518) is proposed to accommodate these novel strains.

IMPORTANCE Finfish aquaculture is the fastest growing global food production sector. Infectious disease, particularly emergent pathogens, pose a significant threat to established and nascent aquaculture industries worldwide. Herein, we characterize a novel pathogen isolated from mortality events in cultured spotted rose snapper in Central America. The bacteria recovered from these outbreaks were genetically and phenotypically dissimilar from other known *Francisella* spp. from fish, representing a

Received 24 January 2018 Accepted 5 June 2018

Accepted manuscript posted online 18 June 2018

Citation Soto E, Griffin MJ, Morales JA, Calvo EB, de Alexandre Sebastião F, Porras AL, Viquez-Rodríguez X, Reichley SR, Rosser TG, Ware C, Byrne BA, García JC, LaFrentz BR, Camus AC. 2018. *Francisella marina* sp. nov., etiologic agent of systemic disease in cultured spotted rose snapper (*Lutjanus guttatus*) in Central America. *Appl Environ Microbiol* 84:e00144-18. <https://doi.org/10.1128/AEM.00144-18>.

Editor Harold L. Drake, University of Bayreuth

Copyright © 2018 American Society for Microbiology. All Rights Reserved.

Address correspondence to Esteban Soto, sotomartinez@ucdavis.edu.

* Present address: Stephen R. Reichley, Clear Springs Foods, Inc., Buhl, Idaho, USA.

previously unrecognized member of the genus *Francisella*, for which the name *Francisella marina* sp. nov. is proposed.

KEYWORDS aquaculture, *Francisella*, snapper, fish pathogens

Aquaculture is one of the world's fastest developing food production sectors, largely in response to worldwide declines in wild fisheries and global fish catches (1). However, infectious disease poses a significant threat to aquaculture production and economic viability (2, 3). The rapid expansion of worldwide aquaculture, globalization, and the increased international transport of fish and fish products have facilitated the emergence and rapid dissemination of several potentially devastating disease agents, including members of the genus *Francisella*. Furthermore, intensive aquaculture practices provide an environment favorable to epizootics of disease resulting in significant economic losses (2, 3).

The family *Francisellaceae*, order *Thiotrichales* of the subclass *Gammaproteobacteria*, contains the single genus *Francisella*. Two subspecies, the cold-water pathogen *Francisella noatunensis* subsp. *noatunensis* (syn. *Francisella philomiragia* subsp. *noatunensis* and *Francisella piscicida*) and the temperate/warm-water pathogen *Francisella noatunensis* subsp. *orientalis* (syn. *Francisella asiatica*) have been associated with significant losses in a range of cultured and wild fish species from the Americas, Europe, and Asia (4). *Francisella* spp. are Gram-negative, nonmotile, pleomorphic coccobacilli, ranging from 0.2 to 0.4 μm wide and 0.4 to 1.9 μm long. They are catalase-positive, oxidase-negative, facultative anaerobes with a growth requirement for cysteine. While *F. noatunensis* subsp. *noatunensis* and *F. noatunensis* subsp. *orientalis* have been well characterized and their impacts on fish health broadly described, uncharacterized *Francisella* spp. have been isolated from marine environments (5), suggesting that additional species will be recognized in the future.

Francisellosis in cold- and warm-water fish results in similar nonspecific clinical signs, including abnormal swimming and anorexia. Catastrophic outbreaks can occur, with mortality rates exceeding 90%. Disease incidence is associated with a variety of fish sizes and ages, water temperature, water quality, and handling stress (4). External changes include pale gills, pale or darkened skin, petechial to ecchymotic hemorrhages, scale loss, skin ulceration, frayed fins, and exophthalmia. Internally, ascites and marked organomegaly characterize the disease. Pale tan to cream-colored granulomas are dispersed primarily in the kidneys and spleen but may occur in the gills, liver, gastrointestinal tract, and mesenteric fat. The small bacteria are found within vacuoles in macrophage cytoplasm (4).

Herein we report findings from investigations of mortality events that occurred in cultured spotted rose snapper (*Lutjanus guttatus*) on the Pacific coast of Central America in 2015 and 2016. A previously unrecognized *Francisella* sp. was recovered and characterized by multiple molecular and phenotypic techniques. Histopathologic findings are described, and Koch's postulates were fulfilled.

RESULTS

Clinical signs and histopathology of affected snapper. Clinically affected fish weighed 0.05 to 0.3 g and were 2 to 3 cm in length. The diseased fish were under-conditioned and anorexic and swam lethargically just beneath the water's surface, often with darkened skin and distended coeloms. No specific external signs were evident, and no ectoparasites were present on gill clips or skin wet mounts. Mortality was estimated at 3 to 8% per day. Some survivors developed disproportionately large heads and small bodies. Histologically, the most severe changes involved the spleen, kidneys, liver, pancreas, heart, peritoneum, and intestine (Fig. 1), consisting of granulomatous inflammation, with large numbers of macrophages containing small pleomorphic coccobacilli. Bacteria were most evident with Giemsa and toluidine blue stains (Fig. 1D). Unaffected fish had normal growth and development in sea cages, particularly if larger than 1.5 g at the time of stocking.

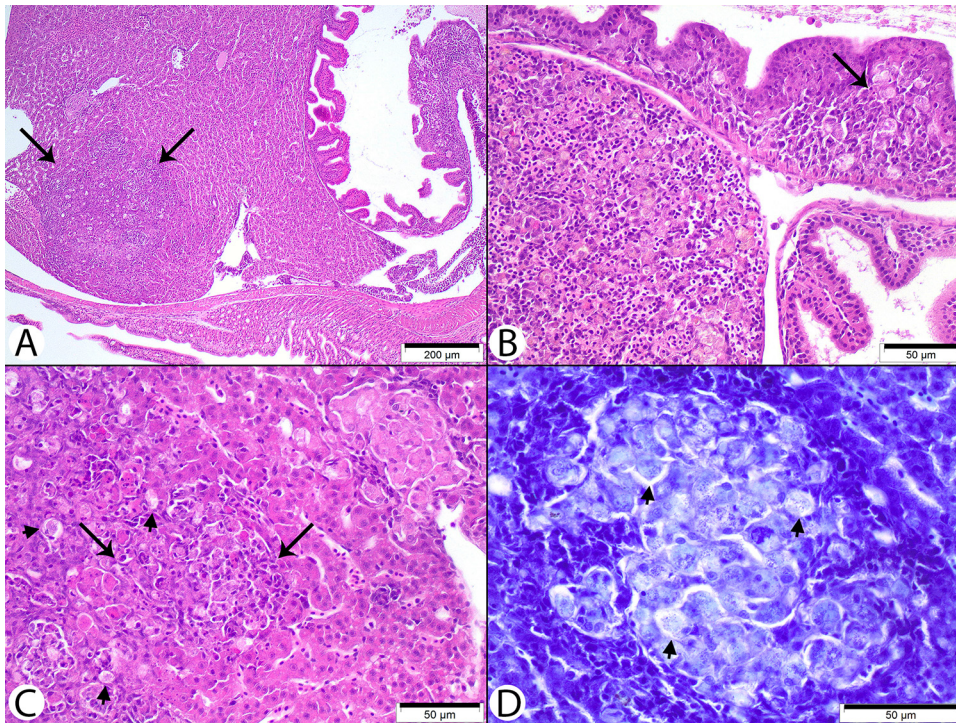


FIG 1 Histologic lesions in a spotted rose snapper (*Lutjanus guttatus*) naturally infected with a novel *Francisella* sp. (A) Low-magnification image of liver with a large focus of necrosis and granulomatous inflammatory infiltrates (arrows). H&E stain. Bar, 200 μ m. (B) The spleen (lower left) is enlarged by inflammatory infiltrates dominated by macrophages. An arrow indicates an area of submucosal inflammation. The pale-staining cells are macrophages with cytoplasmic vacuoles containing bacteria. H&E stain. Bar, 50 μ m. (C) Higher-magnification image of liver with a small focal area of necrosis and granulomatous inflammation. Arrowheads indicate vacuolated macrophages with intracellular bacteria. H&E stain. Bar, 50 μ m. (D) Giemsa-stained section of liver with an irregular, pale-staining focus composed of macrophages with small intracytoplasmic bacteria typical of *Francisella* spp. Arrowheads indicate vacuolated macrophages with intracellular bacteria. Bar, 50 μ m.

Isolation, growth, and biochemical characteristics. A bacterium with a single-colony morphology was recovered from the coelomic cavities of diseased snapper. Growth of isolates E103-15 and E95-16 was visible after 24 h at 28 to 30°C, producing whitish-gray, smooth, convex colonies on blood agar. Growth at 20 to 28°C was slow, requiring 4 days of incubation, and no growth was observed at 37°C (Table 1). Under light microscopy, the bacterium was pleomorphic, Gram negative, nonmotile, and ~0.5 to 1 μ m in diameter.

All novel *Francisella* isolates were catalase positive and spot indole and cytochrome oxidase negative. Reactions in the triple sugar iron (TSI) medium were alkaline slant and alkaline butt, with no H₂S or gas production. All isolates were negative for urease,

TABLE 1 Growth analysis of a novel *Francisella* sp. (E95-16) in Central America^a

Temp (°C)	Growth ^b		Growth ^b	
	24 h	96 h	24 h	96 h
	MTM	Blood agar	MTM	Blood agar
20	–	–	+	++
25	+	++	++	+++
30	++	+++	+++	++++
37	–	–	–	–

^aGrowth was on modified Thayer-Martin agar (MTM) and Columbia agar supplemented with 5% sheep blood (blood agar) at different temperatures (20, 25, 30 and 37°C) for 24 and 96 h.

^b+, growth only in first quadrant of inoculated plate; ++, growth in first and second quadrants of inoculated plate; +++, growth in first, second, and third quadrants of inoculated plate; +++++, growth in all quadrants; –, no growth observed.

TABLE 2 *Francisella* species genomes used in MLSA primer design and Bayesian analysis and 16S rRNA gene homology (1,357 bp) to case isolates E95-16 and E103-15

Isolate	GenBank accession no.	16S rRNA gene homology (%)
<i>Francisella</i> sp. TX077308	NC_015696	99.9
<i>Francisella</i> sp. FSC1006	NZ_CP009574	99.6
<i>F. noatunensis</i> subsp. <i>orientalis</i> F1	NZ_CP018051	98.9
<i>F. noatunensis</i> subsp. <i>orientalis</i> FNO24	NZ_CP011922	98.9
<i>F. noatunensis</i> subsp. <i>orientalis</i> LADL 07-185A	NC_023029	98.9
<i>Francisella</i> sp. TX077310	NZ_CP016796	98.9
<i>F. noatunensis</i> subsp. <i>noatunensis</i> FSC772	NZ_CP022207	98.8
<i>F. philomiragia</i> subsp. <i>philomiragia</i> 0#319-067	NZ_CP009436	98.7
<i>F. philomiragia</i> subsp. <i>philomiragia</i> ATCC 25015	NZ_CP010019	98.7
<i>F. philomiragia</i> subsp. <i>philomiragia</i> ATCC 25017	NC_010336	98.7
<i>F. tularensis</i> subsp. <i>tularensis</i> NE061598	NC_017453	97.5
<i>F. tularensis</i> subsp. <i>tularensis</i> SCHU S4	NC_006570	97.5
<i>F. tularensis</i> subsp. <i>novicida</i> AL97-2214	NZ_CP009653	97.4
<i>F. tularensis</i> subsp. <i>novicida</i> F6168	NZ_CP009353	97.4
<i>F. tularensis</i> subsp. <i>holarctica</i> F92	NC_019537	97.3
<i>F. tularensis</i> subsp. <i>holarctica</i> LVS	NC_CP009694	97.3
<i>F. tularensis</i> subsp. <i>holarctica</i> OSU18	NC_008369	97.3
<i>F. tularensis</i> subsp. <i>novicida</i> PA-7858	NZ_CP016635	97.3
<i>F. tularensis</i> subsp. <i>tularensis</i> WY96-3418	NC_009257	97.3

citrate utilization, and β -galactosidase. The only positive tests produced by the novel *Francisella* sp. on API 20E identification strips were acetoin production from glucose (Voges-Proskauer test) and gelatinase. Comparably, *F. noatunensis* isolates were spot indole and cytochrome oxidase negative, failed to grow on any of the tube media, and produced no positive reactions in the identification strip.

Molecular identification. Isolates E103-15 and E95-16 yielded PCR products of 1,150 bp when the *Francisella* genus-specific primers F11 and F5 were used (6), consistent with other members of the genus *Francisella*. However, isolates were negative for the *igIc* gene of *F. noatunensis* subsp. *orientalis* by quantitative PCR (7). Initial sequencing of a 1,357-bp fragment of the 16S rRNA gene demonstrated high homology (99.9%) to *Francisella* sp. isolate TX077308 (GenBank accession no. NC_015696) isolated from seawater in the Gulf of Mexico (5), while demonstrating <99% identity to other validated *Francisella* congeners (Table 2).

DNA fingerprinting and MLSA. Repetitive extragenic palindromic PCR (Rep-PCR) analysis supported the initial 16S rRNA gene sequencing, which revealed isolates E103-15 and E95-16 to be divergent from archived *F. noatunensis* subsp. *orientalis* isolates from other fish species (Fig. 2 and 3). Multilocus sequence analysis (MLSA) showed that isolates recovered from rose snapper were clonal, demonstrating 100% homology at all gene targets, and were most similar to *Francisella* sp. TX077308, forming a discrete phyletic haplogroup, sister to the *F. noatunensis* subsp. *orientalis*/

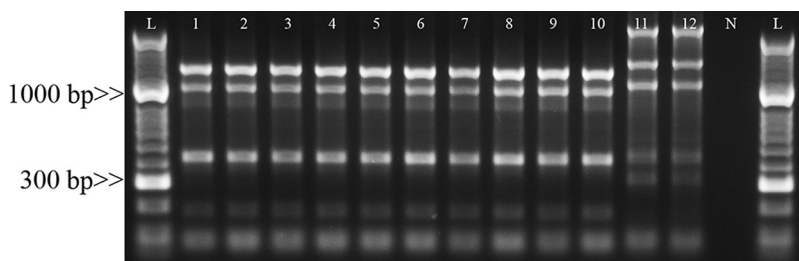


FIG 2 Repetitive extragenic palindromic PCR (Rep-PCR) analysis of unknown *Francisella* sp. isolates from cultured spotted rose snapper and archived *F. noatunensis* subsp. *orientalis* isolates. Amplification was performed using the ERIC I-ERIC II primer set. Lanes L, HyperLadder, 50 bp; lanes 1 to 10, *F. noatunensis* subsp. *orientalis* isolates 1 to 10, respectively (Table 7); lane 11, E95-16; lane 12, E103-15; N, no-template control.

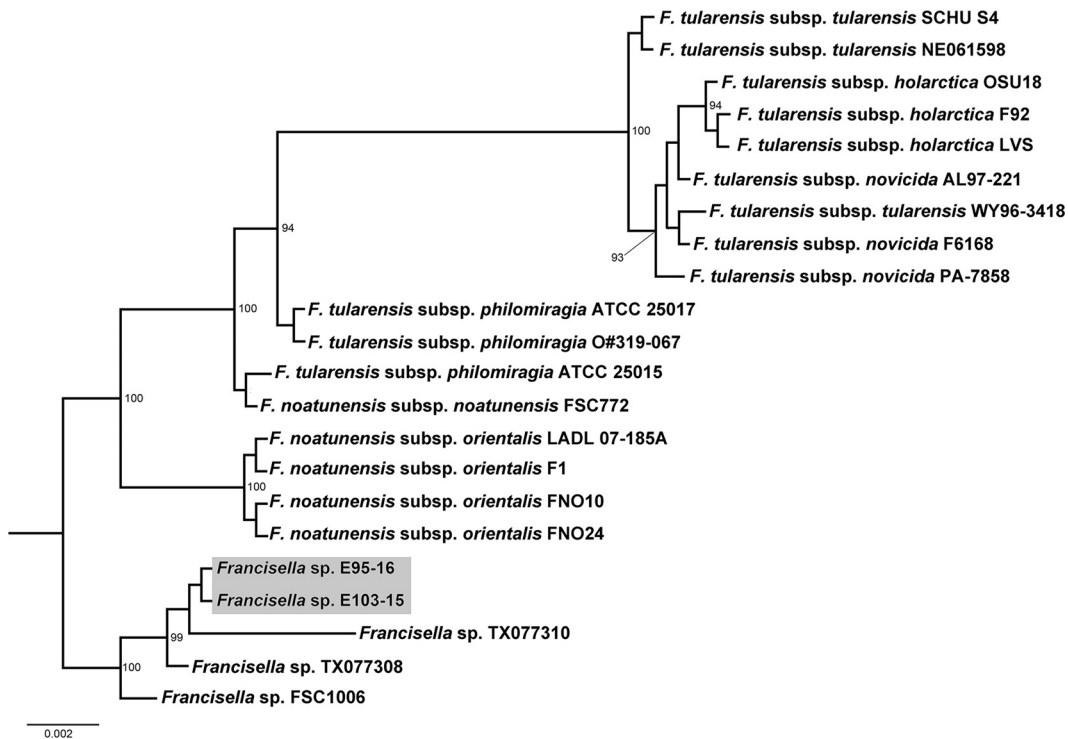


FIG 3 Bayesian inference tree for *Francisella* spp. based on 1,357 bp of the 16S rRNA gene sequence. Numbers adjacent to branches represent posterior probability values (values of <0.50 are not shown). *Francisella* sp. isolates recovered from mortality events in snapper mariculture in Central America are highlighted in gray. GenBank accession numbers for reference genomes used in this study are listed in Tables 2 and 3.

F. noatunensis subsp. *noatunensis*/*F. philomiragia* cluster, within a larger monophyletic clade separate from the *F. tularensis* subspecies cluster (Fig. 4). Sequence similarities (%) for select housekeeping genes of the snapper isolates (E103-15 and E95-16) to genomes of *F. noatunensis* subsp. *orientalis* (LADL 07-285) from tilapia in Costa Rica (GenBank [NC_023029](#)), *F. noatunensis* subsp. *noatunensis* (strain FSC772) from Atlantic salmon (*Salmo salar*) in Chile (GenBank [NZ_CP022207](#)), and *Francisella* sp. TX077308 from seawater in the Gulf of Mexico (GenBank accession no. [NC_015696](#)) are listed in Tables 2 and 3.

Antimicrobial susceptibility testing. MICs for 18 different antimicrobials against isolates E103-15 and E95-16 were identical. Consistent with other *Francisella* spp., the two isolates had low MICs to florfenicol, enrofloxacin, gentamicin, neomycin, oxytetracycline, and tetracycline and high MICs to amoxicillin, erythromycin, ceftiofur, spectinomycin, sulfadimethoxine, and trimethoprim-sulfamethoxazole. Complete MIC findings are presented in Table 4.

Matrix-assisted laser desorption ionization–time of flight mass spectrometry (MALDI-TOF MS) analysis. Both snapper isolates and all archived *F. noatunensis* subsp. *orientalis* isolates ($n = 5$) yielded high-quality spectra, adequate for protein spectrum analysis and comparisons, differentiating the snapper isolates from spectra of other known *Francisella* spp. A dendrogram was constructed using main spectrum profiles (MSPs) from isolates of the two snappers, five *F. noatunensis* subsp. *orientalis* profiles, and reference main spectrum profiles, including six *F. philomiragia* profiles and six *F. tularensis* spectra (Fig. 5). The novel *Francisella* isolates were more similar to the *F. noatunensis* subsp. *orientalis* isolates than to *F. philomiragia* or *F. tularensis* yet formed their own discrete cluster.

FAME analysis. Fatty acid methyl ester (FAME) analysis of the two snapper isolates and archived *F. noatunensis* subsp. *orientalis* isolates ($n = 5$) demonstrated a similar core group of shared fatty acids in all isolates (9:0, 10:0, 11:0, 12:0, 13:0, 14:0, 16:0, 17:1 ω 8c, 16:0 3OH, 18:1 ω 9c, 18:0, 17:0 3OH, 18:0 3OH, 20:0, and summed feature 3 [Table 5]). However,

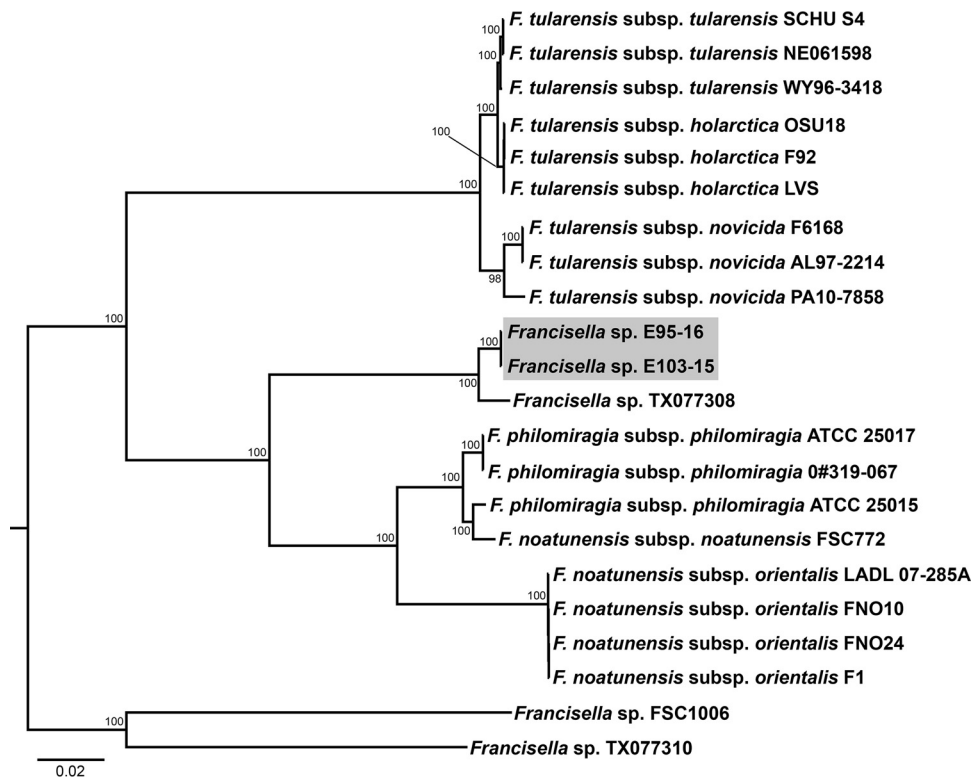


FIG 4 Bayesian inference tree for *Francisella* spp. based on concatenated 16S rRNA > *dnaK* > *gyrB* > *mutS* > *pgm* > *prfB* > *rpoB* > *sodB* sequences. Numbers adjacent to branches represent posterior probability values (values of <0.50 are not shown). *Francisella* sp. isolates recovered from mortality events in snapper mariculture in Central America are highlighted in gray. GenBank accession numbers for reference genomes used in this study are listed in Tables 2 and 3.

Francisella sp. isolates E103-15 and E95-16 exhibited a lower percentage of the fatty acid 12:0 and a higher percentage of the fatty acid 16:0 3OH than the *F. noatunensis* subsp. *orientalis* isolates. Although the fatty acid compositions were low (<1%), isolates E103-15 and E95-16 did not produce fatty acids 17:0 and 20:1 ω7c and were the only isolates to produce the fatty acids 16:1 ω9c, summed feature 2, and summed feature 7 (Table 5). The dendrogram generated from the cluster analysis segregated the isolates

TABLE 3 Sequence identity of select housekeeping genes for *Francisella* sp. isolates recovered from disease outbreaks in cultured spotted rose snapper in Central America and representative *Francisella* genomes^a

Outbreak isolate ^b	% sequence identity to the indicated housekeeping gene (size, bp) of the genome of:																
	<i>Fno</i>			<i>Fnn</i>			<i>TX077308</i>			<i>Fno</i>			<i>Fnn</i>			<i>TX077308</i>	
	16S rRNA gene (1,357)						<i>dnaK</i> (875)			<i>gyrB</i> (1,091)			<i>mutS</i> (859)				
<i>Fno</i> 10	100.0	99.0	98.8	100.0	87.4	87.7	100.0	96.0	85.9	100.0	92.9	81.3					
E95-16	98.9	98.8	99.9	87.1	93.4	98.5	85.2	85.7	97.6	80.7	80.6	98.7					
E103-15	98.9	98.8	99.9	87.1	93.4	98.5	85.2	85.7	97.6	80.7	80.6	98.7					
	<i>pgm</i> (702)			<i>prfB</i> (765)			<i>rpoB</i> (887)			<i>sodB</i> (334)							
<i>Fno</i> 10	100.0	95.0	94.3	100.0	94.1	85.6	100.0	93.9	89.4	100.0	89.5	84.1					
E95-16	94.4	96.0	98.1	87.5	88.8	94.9	89.4	88.4	100.0	83.5	84.4	99.1					
E103-15	94.4	96.0	98.1	87.5	88.8	94.9	89.4	88.4	100.0	83.5	84.4	99.1					

^aSequence identity was determined for *Francisella* sp. isolates recovered from disease outbreaks in cultured spotted rose snapper (*Lutjanus guttatus*) in Central America (E95-16 and E103-15) and representative genomes of *Francisella noatunensis* subsp. *orientalis* LADL 07-285 (*Fno*) from tilapia (*Oreochromis* sp.) in Costa Rica (GenBank accession no. [NC_023029](#)), *Francisella noatunensis* subsp. *noatunensis* FSC772 (*Fnn*) from Atlantic salmon (*Salmo salar*) in Chile (GenBank accession no. [NZ_CP022207](#)), and *Francisella* sp. TX077308 from seawater in the Gulf of Mexico ([NC_015696](#)).

^b*Francisella noatunensis* subsp. *orientalis* isolate 10 (*Fno* 10) was included as a sequencing-positive control.

TABLE 4 Antimicrobial MICs of novel *Francisella* sp. isolates determined by broth microdilution^a

Antimicrobial	MIC ($\mu\text{g/ml}$)	
	E95-16	E103-15
Enrofloxacin	<0.12	<0.12
Gentamicin	<0.5	<0.5
Cetiofur	>4	>4
Neomycin	<2	<2
Erythromycin	>4	>4
Oxytetracycline	<0.25	<0.25
Tetracycline	<0.25	<0.25
Amoxicillin	>16	>16
Spectinomycin	>64	>64
Sulfadimethoxine	>256	>256
Trimethoprim-sulfamethoxazole	>2/38	>2/38
Florfenicol	<1	<1
Sulfathiazole	>256	>256
Penicillin	>8	>8
Streptomycin	<8	<8
Novobiocin	2	2
Tylosin tartrate	>20	>20
Clindamycin	>4	>4

^aBroth microdilution was performed according to the methods of Soto et al. (21).

into two clusters, one composed of the *F. noatunensis* subsp. *orientalis* isolates and one composed of isolates E103-15 and E95-16 (Fig. 6).

Experimental challenge. No clinical signs of diseases were observed in the challenged fish. Limited mortality was observed during experimental challenges. Intracoeleomic (IC) injection of $\sim 10^7$ CFU/fish resulted in 40% (4/10) mortality in naive Nile tilapia (*Oreochromis niloticus*) 21 days postinoculation. Challenged fish died on days 5 ($n = 1$), 7 ($n = 2$), and 20 ($n = 1$), although postmortem autolysis precluded histological analysis. No naive blue tilapia (*O. aureus*) died. Similarly, no mortality was found in either tilapia species challenged via immersion routes. At the completion of the experimental challenge, all control fish were alive, and no bacterial infection was detected in spleen homogenates. Digests of harvested spleens from surviving fish in

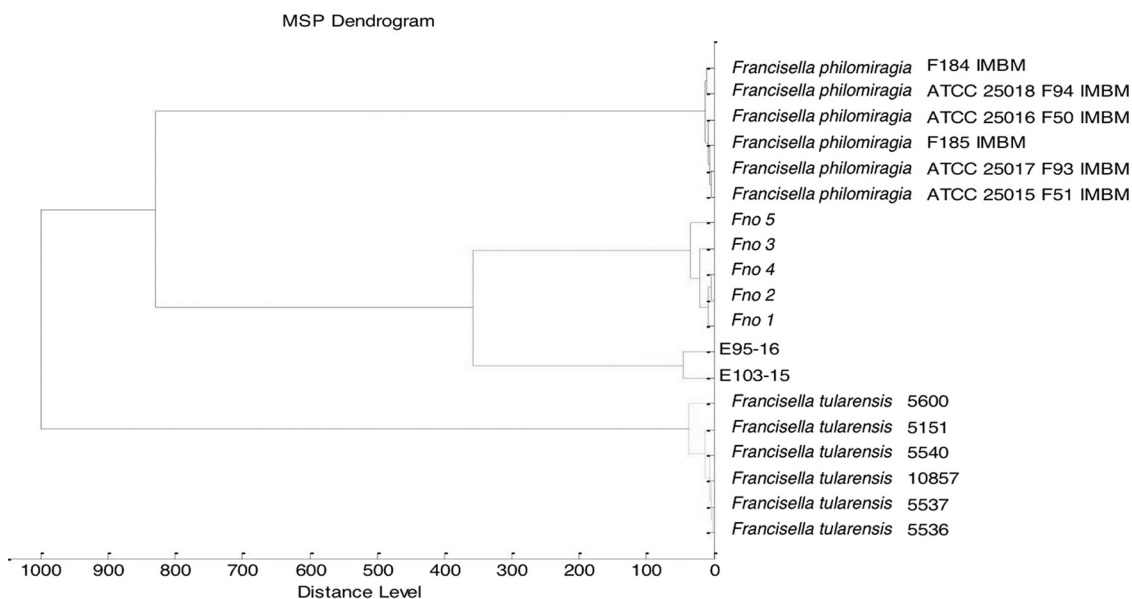


FIG 5 Dendrogram constructed from MALDI-TOF MS main spectrum profiles of 19 *Francisella* sp. strains, including five *Francisella noatunensis* subsp. *orientalis* (*Fno*) strains (Table 7) and two novel *Francisella marina* isolates recovered from cultured snapper (*Lutjanus guttatus*) (E103-15 and E95-16).

TABLE 5 Fatty acid composition of five *F. noatunensis* subsp. *orientalis* isolates and two *Francisella* species isolates^a

Fatty acid	Fatty acid composition (%) ^a						
	<i>Francisella</i> sp.		<i>F. noatunensis</i> subsp. <i>orientalis</i>				
	E103-15	E95-16	Isolate 1	Isolate 2	Isolate 3	Isolate 4	Isolate 5
9:0	0.40 ± 0.35	0.65 ± 0.02	1.28 ± 0.38	1.19 ± 0.10	1.32 ± 0.28	1.39 ± 0.06	1.14 ± 0.15
10:0	54.2 ± 0.81	52.4 ± 2.20	51.4 ± 3.52	45.6 ± 8.21	45.3 ± 7.62	46.1 ± 2.39	51.8 ± 1.16
11:0	0.26 ± 0.23	0.37 ± 0.03	1.45 ± 0.47	1.38 ± 0.15	1.60 ± 0.36	1.66 ± 0.08	1.40 ± 0.16
12:0	0.77 ± 0.02	0.77 ± 0.02	4.30 ± 0.10	4.00 ± 0.53	4.09 ± 0.49	3.97 ± 0.10	4.15 ± 0.08
13:0	0.35 ± 0.32	0.34 ± 0.07	1.18 ± 0.26	1.53 ± 0.45	1.73 ± 0.24	1.86 ± 0.10	1.40 ± 0.14
14:0	16.7 ± 1.00	16.9 ± 0.48	17.1 ± 2.40	19.4 ± 0.83	19.0 ± 2.14	18.2 ± 0.35	17.3 ± 1.37
16:1 ω9c	0.55 ± 0.02	0.64 ± 0.06	ND	ND	ND	ND	ND
16:0	3.20 ± 0.19	3.33 ± 0.29	2.75 ± 0.52	3.58 ± 1.24	3.54 ± 1.28	3.55 ± 0.58	2.94 ± 0.04
17:1 ω8c	0.19 ± 0.16	0.33 ± 0.03	0.42 ± 0.32	0.71 ± 0.24	0.76 ± 0.10	0.73 ± 0.04	0.52 ± 0.03
17:0	ND	ND	0.44 ± 0.07	0.36 ± 0.62	0.67 ± 0.14	0.28 ± 0.48	0.51 ± 0.12
16:0 3OH	6.49 ± 0.63	6.49 ± 0.10	2.65 ± 0.31	3.04 ± 0.51	3.40 ± 0.29	3.40 ± 0.29	3.14 ± 0.08
18:1 ω9c	5.57 ± 0.64	5.80 ± 0.66	6.74 ± 0.89	7.94 ± 2.02	7.83 ± 2.04	7.75 ± 1.16	6.66 ± 0.07
18:1 ω5c	ND	ND	0.12 ± 0.22	0.20 ± 0.35	0.21 ± 0.36	0.20 ± 0.35	ND
18:0	0.66 ± 0.23	0.56 ± 0.05	2.00 ± 1.05	1.54 ± 0.14	1.28 ± 0.54	1.27 ± 0.17	1.24 ± 0.06
17:0 3OH	0.71 ± 0.12	0.83 ± 0.07	0.76 ± 0.25	0.84 ± 0.35	0.92 ± 0.17	0.96 ± 0.07	0.75 ± 0.19
19:0	ND	ND	ND	0.08 ± 0.13	0.07 ± 0.12	ND	ND
18:0 3OH	7.80 ± 0.54	8.27 ± 0.29	4.31 ± 0.32	5.62 ± 1.97	5.87 ± 1.83	6.27 ± 0.73	4.80 ± 0.14
20:1 ω7c	ND	ND	0.55 ± 0.08	0.84 ± 0.53	0.09 ± 0.16	0.22 ± 0.20	0.35 ± 0.30
20:0	0.39 ± 0.06	0.42 ± 0.04	0.51 ± 0.09	0.68 ± 0.09	0.59 ± 0.07	0.55 ± 0.06	0.56 ± 0.16
Summed feature 2 ^b	0.15 ± 0.13	0.21 ± 0.02	ND	ND	ND	ND	ND
Summed feature 3 ^c	0.82 ± 0.14	0.78 ± 0.05	1.36 ± 0.09	1.08 ± 0.35	1.21 ± 0.05	1.09 ± 0.05	1.25 ± 0.04
Summed feature 6 ^d	ND	ND	ND	0.06 ± 0.10	0.09 ± 0.15	ND	ND
Summed feature 7 ^e	0.67 ± 0.21	0.76 ± 0.07	ND	ND	ND	ND	ND

^aValues are means ± standard deviations of results of triplicate FAME extractions per isolate. ND, not detected.

^bThe fatty acids 16:1 iso I/14:0 3OH and 14:0 3OH/16:1 iso I could not be separated from each other and together were considered summed feature 2.

^cThe fatty acids 16:1 ω7c/16:1 ω6c and 16:1 ω6c/16:1 ω7c could not be separated from each other and together were considered summed feature 3.

^dThe fatty acids 19:1 ω11c/19:1 ω9c and 19:1 ω9c/19:1 ω11c could not be separated from each other and together were considered summed feature 6.

^eThe fatty acids 19:1 ω7c/19:1 ω6c and 19:1 ω6c/ω7c/19c could not be separated from each other and together were considered summed feature 7.

each group of animals challenged by IC injection and immersion routes with isolate E103-15 were plated on modified Thayer-Martin agar for CFU determination per milligram of organ weight. One of three Nile tilapia from the immersion challenge yielded CFU from its spleen, with an estimated bacterial load of 1 CFU/mg spleen, while two of three Nile tilapia from the injection challenge group had positive splenic cultures, with estimated bacterial loads of 120 and 1 CFU/mg spleen, respectively. Comparably, three of three blue tilapia from the IC injection challenge group had positive splenic cultures, with estimated bacterial loads of 1, 1, and 4 CFU/mg spleen. The spleens of these animals were grossly nondescript. No viable bacteria were recovered from Nile or blue tilapia control fish or blue tilapia challenged by immersion.

Incidental findings in both control and treatment fish groups included scattered eosinophilic granular cells, mild nephrocalcinosis, mineralization in the pseudobranch,

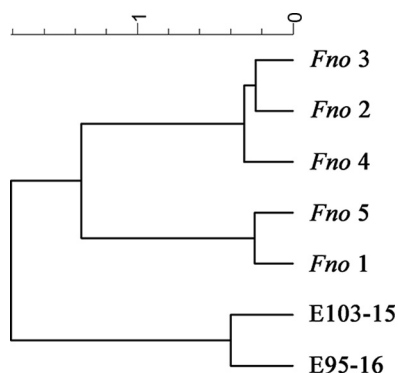


FIG 6 Dendrogram of fatty acid profiles of five *Francisella noatunensis* subsp. *orientalis* (*Fno*) isolates and two *Francisella marina* isolates (E103-15 and E95-16) (Table 7).

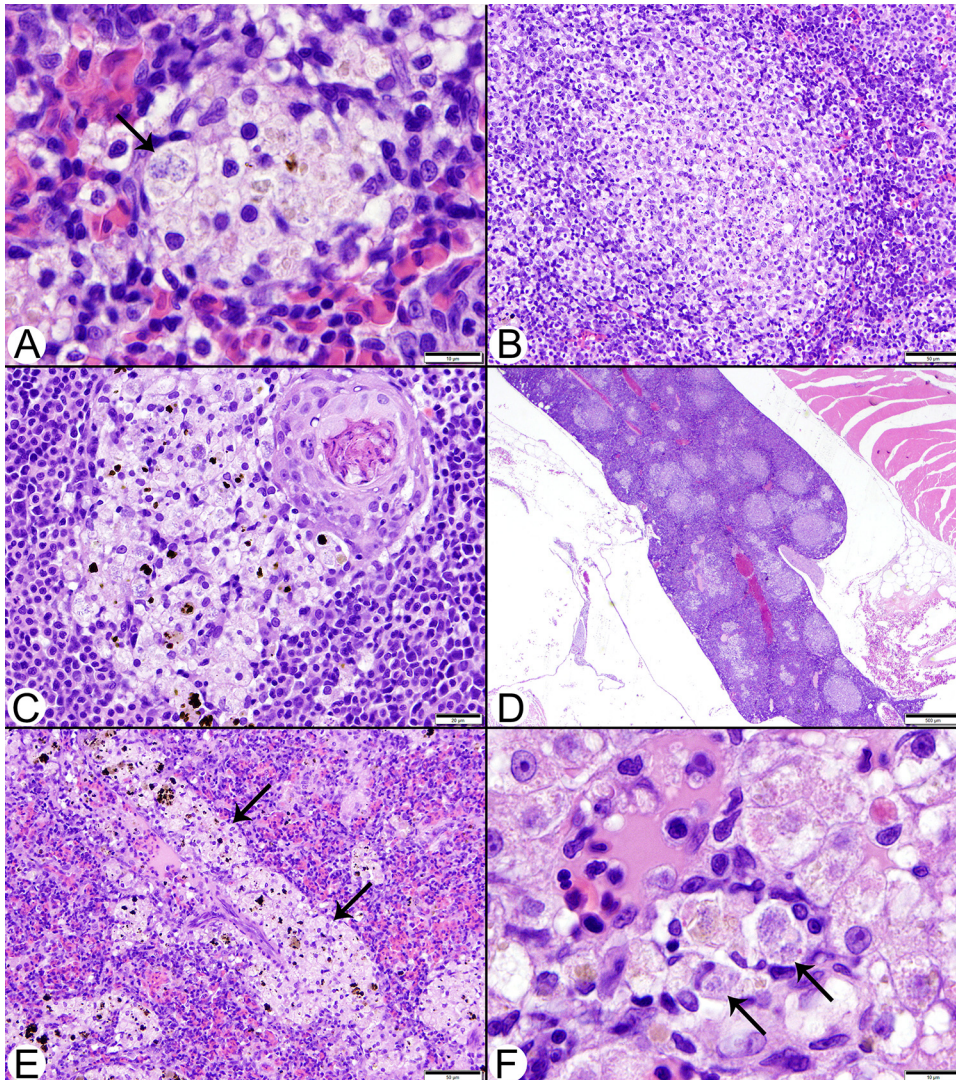


FIG 7 Hematoxylin and eosin (H&E)-stained tissue sections from Nile and blue tilapia challenged with *Francisella marina* isolate E95-16 by intracoelomic injection. Lesions were similar in both species and most commonly affected the head kidney and spleen. (A) Head kidney with a small lesion composed of vacuolated macrophages. The arrow indicates a cluster of pleomorphic intracellular bacteria. Bar, 10 μm . (B) More advanced head kidney lesion with a central region containing apoptotic cells and necrotic debris. Bar, 50 μm . (C) Head kidney lesion dominated by typical vacuolated macrophages. A small granuloma with central caseation surrounded by epithelioid cells is visible in the upper right. Granuloma formation was rare and interpreted as a final stage in lesion progression. Bar, 20 μm . (D) Low-magnification image of head kidney with extensive, frequently coalescing lesions. Bar, 500 μm . (E) Splenic lesions began with expansion of periarteriolar sheaths by vacuolated macrophages (arrows). Bar, 50 μm . (F) Liver with a small perivascular cluster of macrophages containing intracellular bacteria. Bar, 10 μm .

and mild bile duct hyperplasia. Lesions in surviving Nile and blue tilapia challenged by IC injection were dominated by variably sized, often irregular, loosely organized collections of pale-staining macrophages with vacuolated cytoplasm that often contained pale eosinophilic to golden or black cytoplasmic granules. Scattered throughout were small numbers of macrophages with a large cytoplasmic vacuole containing small to large numbers of small coccoid bacteria (Fig. 7A). Some foci contained small numbers of lymphocytes, primarily on their periphery. One blue tilapia had extensive coalescing lesions in the head kidney, with abundant central necrotic debris and apoptotic cells (Fig. 7B). Well-organized epithelioid granulomas with caseous centers were seen in only two Nile tilapia (Fig. 7C). Comparable lesions were present in the kidney and liver of one immersion-challenged Nile tilapia, but no bacteria were observed.

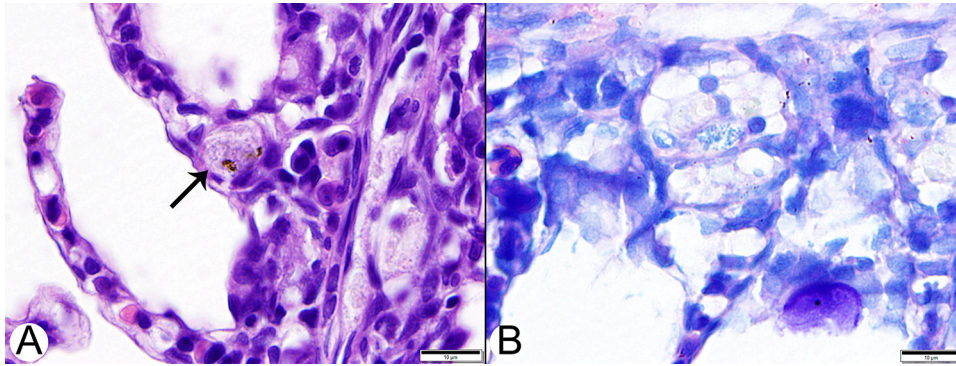


FIG 8 Gill lesions in blue tilapia challenged with *Francisella marina* isolate E95-16 by intracoelomic injection. (A) Gill changes were inconspicuous, often involving only single macrophages laden with bacteria (arrow) within capillary lumens at the bases of lamellae. H&E stain. Bar, 10 μ m. (B) In all tissue locations, the small bacteria were best visualized using Giemsa stains. Bar, 10 μ m.

In both tilapia species, the head kidney and spleen were most commonly and seriously affected. Head kidney lesions were randomly distributed (Fig. 7D), while those in the spleen expanded ellipsoids (Fig. 7E). Liver lesions were infrequent, small, and usually located adjacent to vascular or biliary structures (Fig. 7F). Other commonly affected sites included the ocular choroid rete and the gills. Gill lesions were widely distributed, but inconspicuous, usually involving only individual or small numbers of macrophages within the lumens of or immediately adjacent to the bases of lamellar capillaries (Fig. 8A). Infrequent lesion sites included the trunk kidney, where only hematopoietic tissues were affected, the meninges, gastric submucosa, and skeletal muscle. In all lesions, bacteria were best visualized using Giemsa stains (Fig. 8B). Lesion distribution findings are summarized in Table 6.

DISCUSSION

Since its first description in 2005, piscine francisellosis has emerged as an important disease of cultured fish, affecting a wide range of freshwater and marine fish species around the world. Historically, francisellosis has been attributed to two subspecies of *Francisella noatunensis*, namely *Francisella noatunensis* subsp. *noatunensis* and *Francisella noatunensis* subsp. *orientalis*, the latter of which has been linked to epizootics in cultured tilapia in Central America (8). The current study reports the isolation and characterization of a novel marine *Francisella* sp. causing mortality in cultured spotted rose snapper in Central America.

Multiple techniques, including Rep-PCR DNA fingerprinting, MLSA, MALDI-TOF MS,

TABLE 6 Lesion distribution in Nile and blue tilapia challenged with *Francisella* E95-16 from Central America^a

Fish and challenge	No. of tissue samples with lesions/total no. ^b											
	BRN	OCR	GIL	HKD	TKD	LVR	SPL	STM	INT	HRT	SKM	GND
Nile tilapia												
Control	0/3	0/3	0/3	0/3	0/3	0/3	0/3	0/3	0/3	0/3	0/3	0/3
Immer	0/3	0/3	0/3	1/3 ^c	1/3 ^c	1/3 ^c	0/3	0/3	0/3	0/2 ^d	0/3	0/3
IC inj	1/3	2/3	3/3	3/3	2/3	2/3	3/3	0/3	0/3	0/3	1/3	0/3
Blue tilapia												
Control	0/3	0/3	0/3	0/3	0/3	0/3	0/3	0/3	0/3	0/3	0/3	0/3
Immer	0/3	0/3	0/3	0/3	0/3	0/3	0/3	0/3	0/3	0/3	0/3	0/3
IC inj	1/3	2/3	2/3	3/3	0/3	2/3	0/2 ^d	1/3	0/3	0/3	0/3	0/3

^aTilapia were challenged by the immersion (Immer) and intracoelomic injection (IC inj) routes.

^bAbbreviations: BRN, brain; OCR, ocular choroid rete; GIL, gill; HKD, head kidney; TKD, trunk kidney; LVR, liver; SPL, spleen; STM, stomach; INT, intestine; HRT, heart; SKM, skeletal muscle; GND, gonad.

^cComparable lesions, but no bacteria were visualized.

^dOne tissue was not present in histological sections.

and FAME, were employed to compare archived *F. noatunensis* subsp. *orientalis* isolates, typically associated with warm- and temperate-water fish species, and the *Francisella* sp. investigated here. Rep-PCR DNA fingerprinting has been previously used to discriminate closely related bacterial strains (9–11). The ERIC I-ERIC II primer set revealed marked differences between the snapper isolates and *F. noatunensis* subsp. *orientalis*. MLSA is also used to resolve interspecific relationships not readily determined by a single genetic marker, such as the multicopy 16S rRNA gene. In addition to gene targets commonly utilized in bacterial systematics (12–16), the analysis included the genes *mutS*, *pgm*, and *prfB*, used specifically to characterize *Francisella* spp. (17). Gene targets were chosen to represent diverse chromosomal loci and a wide distribution among different prokaryote taxa to facilitate PCR primers that would amplify all *Francisella* spp. The MLSA method was adequately robust and discriminated among *Francisella* isolates to the species and subspecies level and, similar to analysis based on the 16S rRNA gene, segregated isolates recovered from spotted rose snapper from other recognized *Francisella* spp. This genetic divergence was supported by MALDI-TOF MS and FAME analysis, which demonstrated notable differences in spectral and fatty acid profiles between the snapper isolates and other *Francisella* spp.

Histological lesions were consistent with francisellosis and, in particular, those described in tilapia challenged with *F. noatunensis* subsp. *orientalis* (18). However, pathogenicity of the *Francisella marina* isolated from the snapper epizootics was less than that caused by *F. noatunensis* subsp. *orientalis* in controlled challenges with tilapia, particularly via immersion (8). Future *in vivo* challenges using a marine fish model of infection, such as snapper, are warranted to investigate the pathogenesis and virulence of the novel isolates.

The MIC profiles of the *Francisella* sp. were consistent with those of *F. noatunensis* subsp. *orientalis* and *F. noatunensis* subsp. *noatunensis*, including susceptibility to oxytetracycline, which reduced mortality in the epizootics described previously (19, 20), and florfenicol (21). This is noteworthy, as oxytetracycline and florfenicol are approved therapeutants against piscine francisellosis in food fish in several fish-producing countries.

The source of the bacteria in these outbreaks is unknown, but recent descriptions of *Francisella endociliophora* and *Francisella halioticida* from marine invertebrates (17, 22, 23) suggest that marine environments may harbor additional *Francisella* spp., some of which may cause disease in aquatic organisms. While the techniques employed herein are reliable methods of bacterial typing, more robust genetic studies consisting of either phylogenomics and/or DNA-DNA hybridization analysis are warranted to elucidate the intrageneric and interspecific relationships between the case isolates and other members of the *Francisella* genus. However, based on these results, it is evident that the isolates recovered from cultured spotted rose snapper in Central America are phylogenetically divergent from any described species of *Francisella* and represent a genetically distinct yet previously unrecognized taxon of *Francisella*, most similar to *Francisella* sp. isolate TX077308 isolated from seawater in the Gulf of Mexico. Based on phenotypic distinctiveness and molecular genetic evidence, it is proposed these strains be classified as representatives of a novel species of the genus *Francisella*, known hereafter as *Francisella marina* sp. nov.

Description of *Francisella marina* sp. nov. *Francisella marina* sp. nov. [ma.ri'na. L. fem. adj. marina, marine, referring to where the type strain was first isolated]. Cells are aerobic, Gram negative, pleomorphic, nonmotile, and ~0.5 to 1 μm in diameter. Growth observed at 20 to 30°C, no growth at 37°C, optimal growth at 30°C. Growth was visible after 24 h at 28 to 30°C, producing whitish-gray, smooth, convex colonies on blood agar. Isolates are spot indole and cytochrome oxidase negative and catalase positive. Reactions in TSI medium are alkaline slant and alkaline butt, with no H_2S or gas production. Isolates are negative for urease, citrate utilization, and β -galactosidase, produce acetoin from sodium pyruvate, and hydrolyze gelatin. Sequencing of an ~1,400-bp fragment of the 16S rRNA gene demonstrated *F. marina* to be most similar

TABLE 7 *Francisella* isolates used in this study

Species and isolate	Yr of isolation	Location	Fish	Environment	Reference
<i>F. noatunensis</i> subsp. <i>orientalis</i>					
1 ^{a,b}	2001	Japan	Three-line grunt (<i>Parapristipoma trilineatum</i>)	Seawater	33
2 ^{a,b}	2011	Texas, USA	Tilapia (<i>Oreochromis</i> sp.)	Freshwater	21
3 ^{a,b}	2012	Costa Rica	Nile tilapia (<i>Oreochromis niloticus</i>)	Freshwater	21
4 ^{a,b}	2012	Hawaii, USA	Tilapia (<i>Oreochromis</i> sp.)	Freshwater	34
5 ^{a,b}	2013	Florida, USA	French grunt (<i>Haemulon flavolineatum</i>)	Seawater	20
6 ^b	2012	Europe	Nile tilapia (<i>O. niloticus</i>)	Freshwater	35
7 ^b	2010	Midwest, USA	Nile tilapia (<i>O. niloticus</i>)	Freshwater	36
8 ^b	2007	Costa Rica	Nile tilapia (<i>O. niloticus</i>)	Freshwater	8
9 ^b	2000–2005	Costa Rica	Tilapia (<i>Oreochromis</i> sp.)	Freshwater	21
10 ^b	Unknown	California, USA	Hybrid striped bass (<i>Morone chrysops</i> x <i>M. saxatilis</i>)	Freshwater	37
<i>Francisella</i> sp.					
E95-16 ^{a,b}	2016	Central America	Snapper (<i>Lutjanus guttatus</i>)	Seawater	Present study
E103-15 ^{a,b}	2015	Central America	Snapper (<i>L. guttatus</i>)	Seawater	Present study

^aIsolates used for biochemical, MALDI-TOF MS, and FAME comparisons.

^bIsolates used for Rep-PCR.

(99.9% identity) to *Francisella* sp. isolate TX077308 cultured from seawater in the Gulf of Mexico, while sharing <99% similarity to other *Francisella* spp. Additional phenotypic and genotypic properties obtained by multilocus sequence analysis of house-keeping genes, repetitive extragenic palindromic PCR fingerprinting, matrix-assisted laser-desorption ionization–time of flight mass spectrometry, and fatty acid methyl ester analysis revealed marked differences between these isolates and other described members of the genus. The type strain, *Francisella* sp. E95-16 (NRRL B-65518), was isolated from a marine fish, spotted rose snapper (*Lutjanus guttatus*), in Puntarenas, Costa Rica.

MATERIALS AND METHODS

Fish history. In 2015 and 2016, a spotted rose snapper (*Lutjanus guttatus*) hatchery on the Pacific coast of Central America reported disease outbreaks with high mortality at the beginning of the rainy season. Most affected fish were undersized fry (2 to 3 cm in length), and disease occurred 30 to 40 days posthatching, during the transition from feeding live *Artemia* sp. to a pelleted commercial diet. Some batches of fish were empirically treated with 2-h immersion baths of 20 ppm tetracycline for several days. While these bath treatments reduced fish losses, mortality persisted.

Isolation and histological examination. Swabs from internal organs and ascitic fluid from the coelomic cavity were used to inoculate Columbia agar supplemented with 5% sheep blood (blood agar). Plates were incubated at 25°C for 5 days. Single colonies, subcultured for purity from primary isolation plates, were suspended in modified Mueller-Hinton II cation-adjusted broth supplemented with 2% IsoVitalEx (BD BBL, Sparks, MD, USA) and 0.1% glucose (MMH) (24). The broth cultures were expanded overnight at 25°C with shaking at 175 rpm. Aliquots of expanded cultures (1 ml) were supplemented with 20% (vol/vol) glycerol and cryogenically stored (–80°C) until further characterization. Additional whole fish were fixed in 10% neutral buffered formalin, processed routinely, and stained with hematoxylin and eosin (H&E), Ziehl-Neelsen, Grocott, toluidine blue, and Giemsa stains for light microscopic examination.

Two isolates (E103-15 and E95-16) recovered from snapper cultured in different outbreaks in 2015 and 2016 were used in this analysis. The optimal *in vitro* growth temperatures of isolates E103-15 and E95-16 were determined by 7-day incubations at 20, 25, 30, and 37°C on blood and modified Thayer-Martin agars (MTM) (BD BBL, Sparks, MD, USA).

Additionally, archived *Francisella noatunensis* subsp. *orientalis* strains used for comparison in this study were isolated from a range of fish species and geographical locations, several of which were described previously (21). Other isolates were generously shared by John Hansen from the Interdisciplinary Program in Pathobiology, University of Washington, Seattle, WA, and Duncan J. Colquhoun at the Section for Bacteriology, Norwegian Veterinary Institute, Oslo, Norway (Table 7).

Biochemical analysis. Isolates (Table 7) were tested for biochemical reactivity using spot tests, tube media, and API 20E identification strips (bioMérieux, Durham, NC). Isolates were spot tested for cytochrome oxidase (Becton Dickinson and Company, Sparks, MD), indole production from tryptophan (indole reagent; Anaerobe Systems, Morgan Hill, CA), and catalase using a 3% H₂O₂ solution (Optima Fisher Chemical).

Tubed medium prepared by the University of California Biological Media Services, Davis, CA (BMS), was used to evaluate the urease test using Christensen's urea agar, sugar fermentation, and hydrogen sulfide production using triple sugar iron (TSI) agar, citrate utilization, and motility using sulfur-indole motility agar. Production of β-galactosidase was tested using the ONPG (*o*-nitrophenyl-β-D-galactopyranoside) (rapid test

TABLE 8 PCR primers used in this study

Assay and primer ^a	Sequence (5'–3')	Reference
Initial molecular diagnostics		
<i>Francisella</i> sp. PCR		
F11	TACCAGTTGAAAACGACTGT	6
F5	CCTTTTTGAGTTTCGCTCC	
<i>F. noatunensis</i> subsp. <i>orientalis</i> <i>iglC</i> qPCR		
<i>iglC</i> forward	GGGCGTATCTAAGGATGGTATGAG	7
<i>iglC</i> reverse	AGCACAGCATAACAGCAAGCTA	
<i>iglC</i> probe (FAM-BHQ-1)	ATCTATTGATGGGCTCACAACCTCACAA	
MLSA		
16S		
27F	GAGTTTGATCCTGGCTCAG	24
1525R	AGAAAGGAGGTGATCCAGCC	
<i>dnaK</i>		
FranDnaK872F	TCTTGTACTAGAGGCATACG	This paper
FranDnaK1889R	ACTACTAACTCTTGCTTCTAT	
<i>gyrB</i>		
FranGyrB130F	GAGGTTGTTGATAATGCTATCG	This paper
FranGyrB1321R	TTTTACGATCACGAGCCTG	
<i>mutS</i>		
FranmutS634F	ATCGGATCAACTTGTCTTATTT	This paper
FranmutS1610R	TGATAGCTCTTCTGCAAAGT	
<i>pgm</i>		
Franpgm576F	CGTTTTGACTCTATGAGTGC	This paper
Franpgm1330R	ATTGGATCTGTATAACTAAAATCATCT	
<i>prfB</i>		
FranprfB54F	SGGCAGACAAAAAGTAGADCT	This paper
FranprfB856R	AGARCGAATCTGRCTWCCCA	
<i>rpoB</i>		
FranrpoB812F	ACACCTTTGTTACCATGACG	This paper
FranrpoB2052R	CATGATGATGCTAACAGGGT	
<i>sodB</i>		
FransodB202F	GCCCAACCAGAWCCAAATG	This paper
FransodB563R	TTTGAATTACCAAACTACCTT	
Rep-PCR		
ERIC I	ATGTAAGCTCCTGGGGATTAC	25
ERIC II	AAGTAAGTGACTGGGGTGAGCG	25

^aqPCR, quantitative PCR; MLSA, multilocus sequence analysis; Rep-PCR, repetitive extragenic palindromic PCR.

(Hardy Diagnostics, Santa Maria, CA). API 20E test strips were inoculated and developed according to the manufacturer's instructions. Incubation of all tubed media and test strips was performed at 28°C in ambient air with a 24-h incubation period.

Molecular analysis. For the isolation of genomic DNA, a loop of bacteria was suspended in 400 μ l of sterile water, washed, centrifuged at 3,000 $\times g$ for 5 min, and resuspended in 200 μ l phosphate-buffered saline (PBS). Genomic DNA was isolated using the High Pure PCR template preparation kit (Roche, Mannheim, Germany) by following the manufacturer's protocol. Isolated DNA was stored at 4°C until further use. *Francisella* sp.-specific PCR (6), universal eubacterial 16S rRNA PCR (24), and *F. noatunensis* subsp. *orientalis* *iglC*-specific quantitative PCR (7) were performed by following established protocols (Table 8). Endpoint PCRs were deemed positive by the presence of appropriate sized bands, visualized by agarose electrophoresis in the presence of ethidium bromide (0.05 μ g/ μ l) and UV illumination. Amplicons were purified with the QiaQuick PCR cleanup kit (Qiagen), and the resulting sequences were compared by BLASTN searches of the National Center for Biotechnology Information's nonredundant nucleotide database. For quantitative PCR, only samples presenting a threshold cycle (C_t) of <40 were considered positive.

DNA fingerprinting. Repetitive extragenic palindromic PCR (Rep-PCR) fingerprinting was performed using the ERIC I-ERIC II primer set on isolates E103-15 and E95-16 and archived *F. noatunensis* subsp. *orientalis* isolates (Tables 7 and 8) as described previously (10, 25). The 50- μ l reaction mixtures consisted of 25 μ l of IQ Supermix (Bio-Rad Laboratories, Inc.), 10 pmol of each primer, 50 ng of template DNA, and nuclease-free water to volume. Amplifications were performed on a C1000 Touch thermal cycler (Bio-Rad Laboratories, Inc.) with the following temperature profiles: 1 cycle at 95°C for 10 min; 5 cycles of 95°C for 1 min, 40°C for 1 min, and 72°C for 5 min; and 35 cycles of 95°C for 1 min, 55°C for 1 min, and 72°C for 5 min. Aliquots of each amplification reaction mixture (10 μ l each) and a molecular weight standard (HyperLadder, 50 bp; Bionline) were electrophoresed through a 1.5% (wt/vol) agarose gel with ethidium bromide (0.5 μ g/ml) and visualized under UV light.

Multilocus sequence analysis. Isolates E103-15 and E95-16 were subjected to multilocus sequence typing and analysis (MLSA), with an archived *F. noatunensis* subsp. *orientalis* isolate (*F. noatunensis* subsp.

orientalis 10) included as a sequence quality control. A combination of slow- and fast-evolving genes were chosen as targets, including a 16S small-subunit rRNA gene (16S) and those encoding molecular chaperone DnaK (*dnaK*), DNA gyrase subunit B (*gyrB*), DNA mismatch repair protein (*mutS*), alpha-D-glucose phosphate-specific phosphoglucomutase (*pgm*), peptide chain release factor 2 (*prfB*), DNA-directed RNA polymerase subunit β (*rpoB*), and superoxide dismutase (*sodB*). Primers were designed using the Primer3 utility in Geneious v.9.1.8 (32) based on complete *Francisella* species genomes available in GenBank (Tables 2 and 3). With the exception of the *sodB* locus, primers were designed to amplify approximately 700- to 1,000-bp fragments.

All MLSA gene targets were amplified in 50- μ l reaction mixtures containing 25 μ l of Platinum PCR supermix high fidelity, 20 pmol of each primer (Table 8), ~50 ng of template DNA, and nuclease-free water to volume. Amplifications were performed on a Bio-Rad C1000 Touch thermal cycler with the following conditions: 94°C for 3 min, followed by 45 cycles of 94°C for 30 s, 55°C for 30 s, and 68°C for 1.5 min, with a final extension step of 68°C for 5 min. Amplification products were visualized under UV light after electrophoretic migration through a 0.8% agarose gel in the presence of ethidium bromide (0.5 μ g/ml). Amplicons were excised and purified using the Qiagen Qiaquick gel extraction kit and sequenced commercially (Eurofins Genomics, Louisville, KY) using the same primers that generated the amplicons. Ambiguous base calls were manually annotated in Geneious using corresponding chromatograms, and contiguous sequences were used in subsequent BLASTn searches and phylogenetic analysis.

The sequenced MLSA targets were aligned with corresponding sequences obtained from complete genomes of select *Francisella* spp. in GenBank (Tables 2 and 3). Sequences for each respective gene target were initially aligned using the default settings of the global alignment implementation built-in to Geneious. All positions in the alignment containing at least one gap were eliminated, and alignments were concatenated in the following order: 16S > *dnaK* > *gyrB* > *mutS* > *pgm* > *prfB* > *rpoB* > *sodB*. The resulting concatenated alignment contained 6,809 sites excluding gaps (6,871 bp, including gaps). The best-fit nucleotide substitution model for each gene was determined based on the Bayesian Information Criterion in MEGA 7: 16S rRNA (HKY + G + I; 1,348 positions), *dnaK* (GTR + G; 875 positions), *gyrB* (T92 + I; 1,083 positions), *mutS* (TN93 + G; 844 positions), *pgm* (T92 + G; 692 positions), *prfB* (T92 + G; 755 positions), *rpoB* (GTR + G + I; 887 positions), and *sodB* (T92 + G; 325 positions) (26, 27). Alignments of 16S rRNA gene sequences, as well as alignments of concatenated sequences, were subjected to partitioned Bayesian inference analysis in MrBayes 3.2.6 by Markov chain Monte Carlo searches of two simultaneous runs of four chains (28). Chains were sampled every 100th tree for 1,000,000 generations (29), at which point convergence was reached (standard deviation of split frequencies was <0.01). The first 25% of trees were discarded as "burn-in," and posterior probability values were calculated from the remaining trees. Consensus trees were visualized using FigTree 1.4.2 (30) and refined in Adobe Illustrator (Adobe, San Jose, CA, USA).

Antimicrobial susceptibility. Antimicrobial susceptibility was assessed using a broth microdilution method adapted from *Francisella tularensis* to *F. noatunensis* subsp. *orientalis* (21, 31). MICs of antimicrobial agents against isolates E103-15 and E95-16 were tested using the Sensititre AVIANF plate system (Sensititre; ThermoFisher, Cleveland, Ohio). MICs were determined as the lowest concentration that resulted in no visible growth.

Matrix-assisted laser desorption ionization-time of flight mass spectrometry. Five archived *F. noatunensis* subsp. *orientalis* isolates and isolates E103-15 and E95-16 (Table 7) were grown on MTM agar at 25°C under ambient atmospheric conditions for 96 h. Protein extraction was performed using the Bruker Daltonik Revision 1 formic acid extraction procedure (Bruker Daltonics, Inc., Billerica, MA). Briefly, 5 to 10 bacterial colonies were suspended in 300 μ l deionized water and 900 μ l of high-performance liquid chromatography (HPLC)-grade absolute ethanol (Sigma-Aldrich), vortexed, and then centrifuged at 12,000 \times g for 2 min. The supernatant was removed, the pellet recentrifuged as described above, residual ethanol was removed, and the pellet was air dried for 2 min. For all isolates, 40 μ l 70% LC-MS formic acid (Sigma-Aldrich) was added to the pellet and thoroughly mixed by pipetting, followed by the addition of 40 μ l of pure acetonitrile (Fluka, ThermoFisher) and additional gentle mixing. The sample was then centrifuged as described above and frozen at -80°C until analysis.

A main spectrum profile (MSP) was created for each isolate using a Biotyper MALDI-TOF MS (Microflex LT/SH; Bruker Daltonics, Inc., Billerica, MA). One microliter of sample supernatant was applied to each of 8 spots on a 96-spot polished steel target (Bruker Daltonics) and air dried, followed by 1 μ l of α -cyano-4-hydroxycinnamic acid (Bruker Daltonics) and air drying. The instrument was calibrated using a bacterial test standard (Bruker Daltonics) and 24 MS spectra were collected for each isolate, making three measurements per spot by using the manufacturer's default settings. Using Flex analysis software (version 3.4), spectra were smoothed and baselines subtracted. Up to three spectra per isolate were removed to eliminate flatline or outlier spectra. MSPs were created in Biotyper OC (version 3.1) according to the manufacturer's directions. Analysis of spectra, including direct comparisons of MSPs, and denrogram creation were performed using default settings within Biotyper OC and included reference MSPs of *F. philomiragia* and *F. tularensis* from the Biotyper OC database.

FAME analysis. The same *F. noatunensis* subsp. *orientalis* and case isolates used for MALDI-TOF MS were included in the fatty acid methyl ester (FAME) analysis and grown under the same conditions (Table 7). Each isolate was streaked onto 15 MTM plates and incubated for 3 days at 25°C. In triplicate for each isolate, an average of 40 mg of bacteria was removed by carefully scraping the surface of the agar plates. Bacteria were coated onto the bottoms of individual Pyrex glass tubes and centrifuged for 1 min at 5,250 rpm. Saponification of bacteria, methylation, FAME extraction, and gas chromatography were performed as previously described (11). Chromatography results were analyzed using the Sherlock microbial identification system (MIS) RCLIN6 6.2 library (version 6.2; MIDI, Inc.). The triplicate FAME results were averaged for each isolate and imported into BioNumerics (version 6.6; Applied Maths) for cluster analysis.

A similarity matrix was calculated using Euclidian distance, and the matrix was converted into a dendrogram using the unweighted pair group method using average linkages (UPGMA) algorithm.

Experimental challenges. All challenges were conducted under protocols approved by the Institutional Animal Care and Use Committee of the University of California Davis School of Veterinary Medicine. Experimental challenges were performed by intracoelomic (IC) injection and immersion with isolate E103-15. Bacteria were grown on MTM agar at 25°C for 24 h. Three single colonies were suspended in 50 ml of MMH broth and incubated in a shaking incubator (150 rpm) overnight at 25°C to a final concentration of $\sim 1.33 \times 10^{10}$ (CFU/ml). Enumeration of bacteria was done by the drop plate method with 10- μ l drops of each 10-fold dilution placed on agar. The approximate number of CFU per ml of inoculum was determined after 24 h of incubation at 25°C.

Naive Nile tilapia and blue tilapia fingerlings were obtained from an aquaculture farm with no history of *Francisella* infection. Before challenge, five fish from each species were collected arbitrarily and confirmed negative for francisellosis by bacterial culture and quantitative PCR analysis of excised spleens (7). Fish (10/tank) were stocked into eight separate 135-liter aquaria containing 60 liters of flowthrough well water maintained at 20 to 22°C with supplemental aeration. Each treatment group (species \times exposure method) consisted of one exposed tank and one unexposed control. Prior to challenge, the fish were anesthetized with buffered MS-222 (100 mg/liter). Fish challenged by IC injection received 0.1 ml of bacterial suspension ($\sim 5.33 \times 10^7$ CFU/fish). For the immersion challenge, doses equating to $\sim 5.5 \times 10^5$ CFU/ml of bacteria were added to tanks, which were held static for 1 h, after which water flow was resumed. Mortality was recorded daily for 21 days. Moribund fish or those showing signs of abnormal swimming, lethargy, exophthalmia, skin lesions, or coelomic distension were euthanized with an overdose of buffered MS-222 (500 mg/liter) and necropsied. After 21 days, the remaining fish were euthanized and the spleens of three fish from each treatment group were harvested to determine approximate bacterial burdens. Organs were weighed, homogenized in 0.2 ml sterile PBS, plated in triplicate on MTM agar plates, and incubated at 25°C for 48 h prior to CFU determinations.

Random surviving fish from each group ($n = 3$ per group) designated for histological evaluation were incised along their ventral midlines and fixed whole in 10% neutral buffered formalin. Bodies were decalcified in Kristensen's solution and transected in 2- to 3-mm sections along the length of the body. Tissues were processed routinely, embedded in paraffin, sectioned at 5 μ m, and stained with hematoxylin and eosin (H&E). Select sections were also stained by the Ziehl-Neelsen and Giemsa methods.

Accession number(s). MLSA sequences have been submitted to GenBank under accession numbers MH057668 to MH057691. The type strain, *Francisella* sp. strain E95-16, has been deposited in the U.S. Department of Agriculture Agricultural Research Service (ARS) Culture Collection under the number NRRL B-65518. The type strain is also being deposited at the American Type Culture Collection (ATCC), but a culture number is not available at this time.

ACKNOWLEDGMENTS

We thank Bernhard Schink (University of Konstanz, Germany) and Stanislava Králová (Czech Collection of Microorganisms, Czech Republic) for assistance in naming the organism.

This research received no specific grant from any funding agency in the public, commercial, or not-for-profit sectors.

REFERENCES

1. Food Agriculture Organization, United Nations. 2011. The state of world fisheries and aquaculture 2010. Food Agriculture Organization, United Nations, Rome, Italy.
2. Cressey D. 2009. Aquaculture: future fish. *Nature* 458:398–400. <https://doi.org/10.1038/458398a>.
3. Krkosek M. 2010. Host density thresholds and disease control for fisheries and aquaculture. *Aquac Environ Interact* 1:21–32. <https://doi.org/10.3354/aei0004>.
4. Colquhoun DJ, Duodu S. 2011. *Francisella* infections in farmed and wild aquatic organisms. *Vet Res* 42:47. <https://doi.org/10.1186/1297-9716-42-47>.
5. Petersen JM, Carlson J, Yockey B, Pillai S, Kuske C, Garbalena G, Potumarthy S, Chalcraft L. 2009. Direct isolation of *Francisella* spp. from environmental samples. *Lett Appl Microbiol* 48:663–667. <https://doi.org/10.1111/j.1472-765X.2009.02589.x>.
6. Forsman M, Sandstrom G, Sjostedt A. 1994. Analysis of 16S ribosomal DNA sequences of *Francisella* strains and utilization for determination of the phylogeny of the genus and for identification of strains by PCR. *Int J Syst Bacteriol* 44:38–46. <https://doi.org/10.1099/00207713-44-1-38>.
7. Soto E, Bowles K, Fernandez D, Hawke JP. 2010. Development of a real-time PCR assay for identification and quantification of the fish pathogen *Francisella noatunensis* subsp. *orientalis*. *Dis Aquat Organ* 89:199–207. <https://doi.org/10.3354/dao02204>.
8. Soto E, Hawke JP, Fernandez D, Morales JA. 2009. *Francisella* sp., an emerging pathogen of tilapia, *Oreochromis niloticus* (L), in Costa Rica. *J Fish Dis* 32:713–722. <https://doi.org/10.1111/j.1365-2761.2009.01070.x>.
9. Soto E, Griffin M, Wiles J, Hawke JP. 2012. Genetic analysis and antimicrobial susceptibility of *Francisella noatunensis* subsp. *orientalis* (syn. *F. asiatica*) isolates from fish. *Vet Microbiol* 154:407–412. <https://doi.org/10.1016/j.vetmic.2011.07.030>.
10. Griffin MJ, Quiniou SM, Cody T, Tabuchi M, Ware C, Cipriano RC, Mauel MJ, Soto E. 2013. Comparative analysis of *Edwardsiella* isolates from fish in the eastern United States identifies two distinct genetic taxa amongst organisms phenotypically classified as *E. tarda*. *Vet Microbiol* 165:358–372. <https://doi.org/10.1016/j.vetmic.2013.03.027>.
11. Reichley SR, Ware C, Steadman J, Gaunt PS, García JC, LaFrentz BR, Thachil A, Waldbieser GC, Stine CB, Buján N, Arias CR, Loch T, Welch TJ, Cipriano RC, Greenway TE, Khoo LH, Wise DJ, Lawrence ML, Griffin MJ. 2017. Comparative phenotypic and genotypic analysis of *Edwardsiella* isolates from different hosts and geographic origins, with emphasis on isolates formerly classified as *E. tarda*, and evaluation of diagnostic methods. *J Clin Microbiol* 55:3466–3491. <https://doi.org/10.1128/JCM.00970-17>.
12. Huang WM. 1996. Bacterial diversity based on type II DNA topoisomerase genes. *Annu Rev Genet* 30:79–107. <https://doi.org/10.1146/annurev.genet.30.1.79>.
13. Yamada Y, Wakabayashi H. 1999. Identification of fish-pathogenic strains

- belonging to the genus *Edwardsiella* by sequence analysis of *sodB*. Fish Pathol 34:145–150. <https://doi.org/10.3147/jsfp.34.145>.
14. Dahllöf I, Baillie H, Kjelleberg S. 2000. *rpoB*-based microbial community analysis avoids limitations inherent in 16S rRNA gene intraspecies heterogeneity. Appl Environ Microbiol 66:3376–3380. <https://doi.org/10.1128/AEM.66.8.3376-3380.2000>.
 15. Stepkowski T, Czaplinska M, Miedzinska K, Moulin L. 2003. The variable part of the *dnaK* gene as an alternative marker for phylogenetic studies of rhizobia and related alpha *Proteobacteria*. Syst Appl Microbiol 26: 483–494. <https://doi.org/10.1078/072320203770865765>.
 16. Janda JM, Abbott SL. 2007. 16S rRNA gene sequencing for bacterial identification in the diagnostic laboratory: pluses, perils, and pitfalls. J Clin Microbiol 45:2761–2764. <https://doi.org/10.1128/JCM.01228-07>.
 17. Brevik OJ, Ottem KF, Kamaishi T, Watanabe K, Nylund A. 2011. *Francisella haliotidica* sp. nov., a pathogen of farmed giant abalone (*Haliotis gigantea*) in Japan. J Appl Microbiol 111:1044–1056. <https://doi.org/10.1111/j.1365-2672.2011.05133.x>.
 18. Soto E, Kidd S, Mendez S, Marancik D, Revan F, Hiltchie D, Camus A. 2013. *Francisella noatunensis* subsp. *orientalis* pathogenesis analyzed by experimental immersion challenge in Nile tilapia, *Oreochromis niloticus* (L). Vet Microbiol 164:77–84. <https://doi.org/10.1016/j.vetmic.2013.01.024>.
 19. Mauel MJ, Miller DL, Frazier K, Liggett AD, Styer L, Montgomery-Brock D, Brock J. 2003. Characterization of a piscirickettsiosis-like disease in Hawaiian tilapia. Dis Aquat Organ 53:249–255. <https://doi.org/10.3354/dao053249>.
 20. Soto E, Primus AE, Pouder DB, George RH, Gerlach TJ, Cassle SE, Johnson T, Boyd S, Handsel T, Yanong RP. 2014. Identification of *Francisella noatunensis* in novel host species French grunt (*Haemulon flavolineatum*) and Caesar grunt (*Haemulon carbonarium*). J Zoo Wildl Med 45:727–731. <https://doi.org/10.1638/2014-0059R.1>.
 21. Soto E, Halliday-Simmonds I, Francis S, Fraites T, Martinez-Lopez B, Wiles J, Hawke JP, Endris RD. 2016. Improved broth microdilution method for antimicrobial susceptibility testing of *Francisella noatunensis orientalis*. J Aquat Anim Health 28:199–207. <https://doi.org/10.1080/08997659.2016.1185051>.
 22. Sjodin A, Ohrman C, Backman S, Larkeryd A, Granberg M, Lundmark E, Karlsson E, Nilsson E, Vallesi A, Tellgren-Roth C, Stenberg P, Thelaus J. 2014. Complete genome sequence of *Francisella endociliophora* strain FSC1006, isolated from a laboratory culture of the marine ciliate *Euplotes raikovi*. Genome Announc 2:e01227-14. <https://doi.org/10.1128/genomeA.01227-14>.
 23. Meyer GR, Lowe GJ, Gilmore SR, Bower SM. 2017. Disease and mortality among Yesso scallops *Patinoptecten yessoensis* putatively caused by infection with *Francisella haliotidica*. Dis Aquat Organ 125:79–84. <https://doi.org/10.3354/dao03130>.
 24. Rainey FA, Ward-Rainey NL, Janssen PH, Hippe H, Stackebrandt E. 1996. *Clostridium paradoxum* DSM 7308T contains multiple 16S rRNA genes with heterogeneous intervening sequences. Microbiology 142: 2087–2095. <https://doi.org/10.1099/13500872-142-8-2087>.
 25. Versalovic J, Koeuth T, Lupski JR. 1991. Distribution of repetitive DNA sequences in eubacteria and application to fingerprinting of bacterial genomes. Nucleic Acids Res 19:6823–6831. <https://doi.org/10.1093/nar/19.24.6823>.
 26. Kumar S, Stecher G, Tamura K. 2016. MEGA7: Molecular Evolutionary Genetics Analysis version 7.0 for bigger datasets. Mol Biol Evol 33: 1870–1874. <https://doi.org/10.1093/molbev/msw054>.
 27. Nei M, Kumar S. Molecular evolution and phylogenetics. Oxford University Press, New York, NY.
 28. Huelsenbeck JP, Ronquist F. 2001. MRBAYES: Bayesian inference of phylogenetic trees. Bioinformatics 17:754–755. <https://doi.org/10.1093/bioinformatics/17.8.754>.
 29. Ronquist F, Huelsenbeck JP. 2003. MrBayes 3: Bayesian phylogenetic inference under mixed models. Bioinformatics 19:1572–1574. <https://doi.org/10.1093/bioinformatics/btg180>.
 30. Rambaut A. 2014. FigTree: Tree Figure Drawing Tool v1.4.2. Institute of Evolutionary Biology, University of Edinburgh, Edinburgh, Scotland.
 31. Baker CN, Hollis DG, Thornsberry C. 1985. Antimicrobial susceptibility testing of *Francisella tularensis* with a modified Mueller-Hinton broth. J Clin Microbiol 22:212–215.
 32. Kearse M, Moir R, Wilson A, Stones-Havas S, Cheung M, Sturrock S, Buxton S, Cooper A, Markowitz S, Duran C, Thierer T, Ashton B, Meintjes P, Drummond A. 2012. Geneious Basic: an integrated and extendable desktop software platform for the organization and analysis of sequence data. Bioinformatics 28:1647–1649. <https://doi.org/10.1093/bioinformatics/bts199>.
 33. Kamaishi T, Fukuda Y, Nishiyama H, Kawakami H, Matsuyama T, Yoshinaga T, Oseko N. 2005. Identification and pathogenicity of intracellular *Francisella* bacterium in three-lined grunt *Parapristipoma trilineatum*. Fish Pathol 40:67–71. <https://doi.org/10.3147/jsfp.40.67>.
 34. Soto E, McGovern-Hopkins K, Klinger-Bowen R, Fox BK, Brock J, Antonio N, Waal Z, Rushton S, Mill A, Tamaru CS. 2013. Prevalence of *Francisella noatunensis* subsp. *orientalis* in cultured tilapia on the island of Oahu, Hawaii. J Aquat Anim Health 25:104–109. <https://doi.org/10.1080/08997659.2013.781554>.
 35. Ramirez-Paredes JG, Larsson P, Wehner S, Bekaert M, Ohrman C, Metseelaar M, Thompson KD, Richards RH, Penman DJ, Adams A. 2017. Draft genome sequence of *Francisella noatunensis* subsp. *orientalis* STIR-GUS-F2f7, a highly virulent strain recovered from diseased red Nile tilapia farmed in Europe. Genome Announc 5:e01555-16. <https://doi.org/10.1128/genomeA.01555-16>.
 36. Soto E, Baumgartner W, Wiles J, Hawke JP. 2011. *Francisella asiatica* as the causative agent of piscine francisellosis in cultured tilapia (*Oreochromis* sp.) in the United States. J Vet Diagn Invest 23:821–825. <https://doi.org/10.1177/1040638711407058>.
 37. Vojtech LN, Sanders GE, Conway C, Ostland V, Hansen JD. 2009. Host immune response and acute disease in a zebrafish model of *Francisella* pathogenesis. Infect Immun 77:914–925. <https://doi.org/10.1128/IAI.01201-08>.